



Facilitator Pricing & Information 2022

Bald Mountain Center

Venues

Bald Mountain Center - located at the top of Bald Mountain offering panoramic 360-degree views of the surrounding Blue Ridge Mountains, 7 cottages for lodging, 2 meeting spaces, a communal tea house, gift shoppe and spa, along with numerous natural amenities.

- Bald Mountain Center rental **includes both Mandala Hall and Forest Studio.**
- **Studio Rental cost:** \$145 per weekday night, \$195 per weekend night, use of the Forest Studio is complimentary.
- **Deposit:** \$5000
- **Participant Minimum:** Bald Mountain Center has a 30-participant minimum requirement. If the 30-participant minimum is not reached Elohee will retain \$2500 of the deposit.
- **Cottages:** Rental of Bald Mountain Center, grants use of up to 7 cottages which sleep 42-56 guests (**see room rates below**).
- **Internet Access:** There is no internet access at the Bald Mountain Center. You will need to bring your own hotspot if you wish to connect to the internet. If you have an emergency situation requiring internet access, please contact Elohee staff via text or call 770-316-9195.

Mandala Hall - is a 1500- square foot room with 180-degree mountain views. Rental of Mandala Hall has a capacity of 30 people.

- **Studio Rental cost:** \$145 per weekday night, \$195 per weekend night
- **Deposit:** \$3000
- **Participant Minimum:** Mandala Hall has a 20-participant minimum requirement. If the 20-participant minimum is not reached Elohee will retain \$1500 of the deposit.
- **Cottages:** Rental of Mandala Hall grants use of up to 4 cottages which sleep 24-32 guests (**see room rates below**).

Forest Studio - is a 600-square foot room with forest views and the sound of the nearby waterfall. Rental of Forest Studio has a capacity of 20 people.

- **Studio Rental cost:** \$145 per weekday night, \$195 per weekend night
- **Deposit:** \$3000
- **Participant Minimum:** Mandala Hall has a 20-participant minimum requirement. If the 20-participant minimum is not reached Elohee will retain \$1500 of the deposit.

- **Cottages:** Rental of Mandala Hall grants use of up to 4 cottages which sleep 24-32 guests (see room rates below).

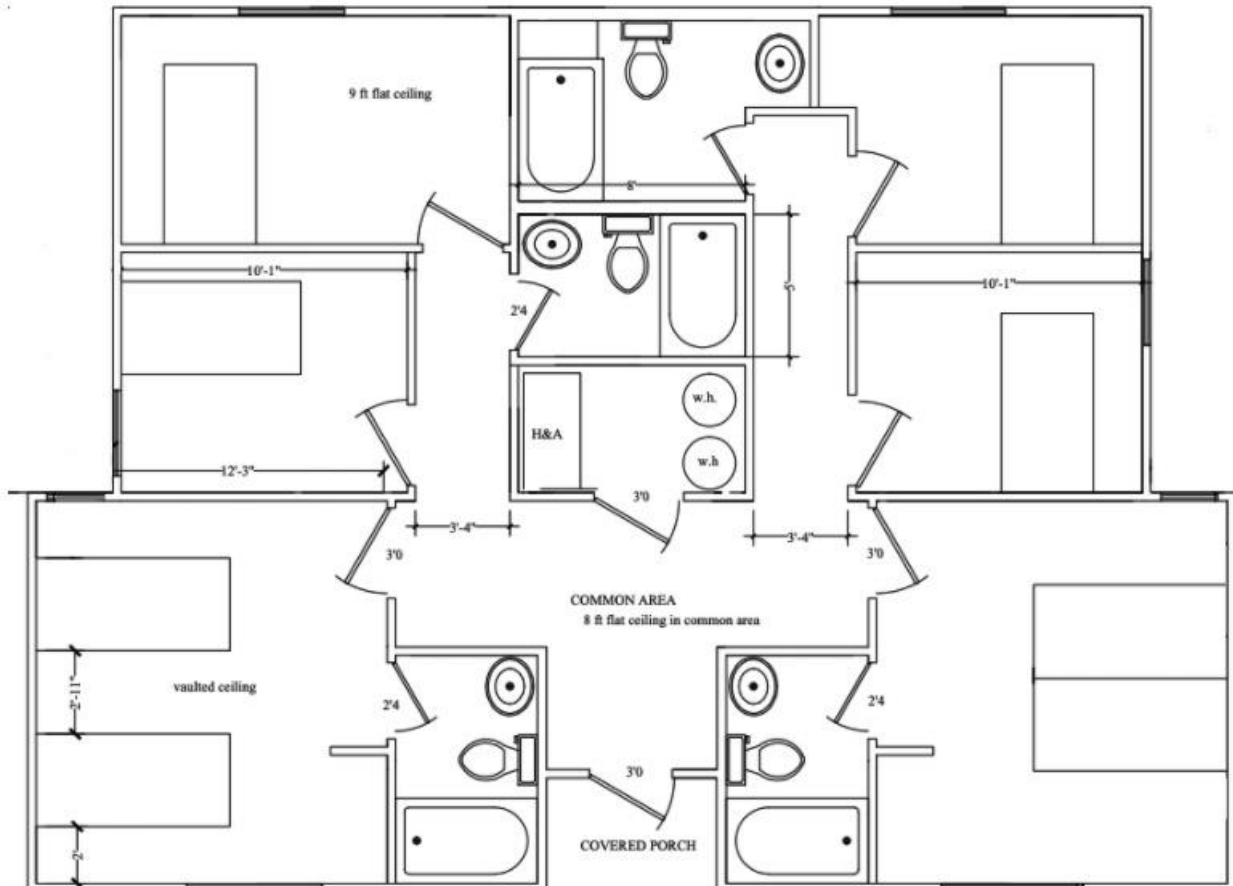
Bald Mountain Center Accommodations

Cottages

Elohee has 7 cottages with 6 rooms in each cottage. Sheets, towels, and bath amenities (soap, shampoo, and conditioner) are provided for all rooms. ADA rooms are available. '

Each cottage can sleep up to 8 guests as follows:

- Single occupancy: 4 single rooms with 1 twin bed and a shared bathroom (shared with one other person)
- Single or double occupancy: 1 room with 1 king bed and a private bathroom
- Single or double occupancy: 1 room with 2 twin beds and a private bathroom



Elohee offers two options for reservations:

- **Elohee takes full reservations for accommodations and tuition.** Facilitator sets the tuition for their retreats and is paid in full, less a 3.5% credit card processing fee one week after completion of the retreat. A W-9 form from the facilitator is required.
- **Elohee takes reservations and payment for accommodations only.** The Facilitator will register participants, collect tuition and provide a link to Elohee's reservation system for the accommodations.

Check in/Check Out: Arrival time for participants staying at the cottages is from 3:00pm – 4:00pm. Upon arrival participants will be shuttled from the car park directly to their room on the top of Bald Mountain. Please note that participants CANNOT arrive early.

If a participant needs to arrive late, please let Elohee know ahead of time. In addition, the participant must call or text Elohee 30 minutes prior to their arrival to ensure someone will be there for shuttle service. On departure day the shuttle service will run from 1:00pm – 2:00pm. Participants will be picked up from their cottages and taken to their cars.

Room and Board Rates: Rates are per night and include lodging, 15% hospitality tax, Georgia's \$5/room/night Hotel-Motel Fee, meals (dinner, breakfast, and lunch), and grounds use fee.

- **Small room (1 twin bed) & shared hall bath – single occupancy:** \$206.15 per person/weekend night (Friday & Saturday) or \$194.65 per person/weekday night (Sunday-Thursday)
- **Large Room (King or 2 Twin)/private bath – double occupancy:** \$206.15 per person/weekend night (Friday & Saturday) or \$194.65 per person/weekday night (Sunday-Thursday)
- **Large room (King or 2 Twin)/private bath -single occupancy:** \$322.30 per person/weekend night (Friday & Saturday) or \$299.30 per person/weekday night (Sunday-Thursday)

Camping (Bald Mountain Guests Only)

Primitive tent sites are available upon request and pre-qualification. We provide the site only. Electricity and water are not provided. Fires are not permitted. The camper needs to bring a tent and all other gear necessary to set up the campsite. A shared bath is nearby containing a shower with bath amenities. No towels are provided.

Camping Rates: Rates are per night and include lodging, taxes, meals (dinner, breakfast, and lunch), and grounds use fee.

- **Weekend night (Friday & Saturday):** \$113.75 per person/night
- **Weekday night (Sunday - Thursday):** \$108 per person/night

Meals

Meal service is provided from arrival day dinner through departure day lunch. Meals include seasonal vegetables and fruit. Chicken/turkey and seafood are included with some meals and vegetarian, vegan and gluten-free options are available. 24-hour tea service at the Tea House is also included.

Meal service is required for all Bald Mountain Center retreats (Mandala Hall + Forest Studio).

Meals are served at the times listed below -

- Breakfast: 8:00 AM – 9:00 AM
- Lunch: 12:00 PM – 1:00 PM
- Dinner: 6:00 PM – 7:00 PM

Additional Services

The following services are available at an additional cost:

- **Massage therapy** is offered onsite by licensed professional massage therapists with limited availability. Reiki treatments are also available. 60 minutes for \$90.
- **Private Fire Service at the Bald Mountain Fire Ring:** \$75 per fire. 7PM or 8:45PM slots of 1.5 hours each are available and are reserved on a first come, first served basis. Please note the quiet time begins at 10:30PM.
- **Guided Nature Hikes** are available for \$75 per hike lasting up to 2 hours.

Facilitator Information

- **Security Deposit:** If minimum participant numbers are met, upon completion of the retreat the deposit will be refunded, applied toward your retreat fees, or rolled over towards your next retreat.
- **Perks for Facilitator:** Free private room and board is provided for one (1) facilitator or assistant with every ten (10) paying participants. Facilitators renting Thanksgiving House will receive complimentary meals.
- **Facilitator Tuition Payout:** Elohee will pay the facilitator the tuition collected minus a 3.5% credit card fee and other charges accrued once the retreat is concluded. We encourage facilitators who require an earlier payout to use our split reservation option.
- **Facilitator Retreat Cancellation Policy:**
 - **More than 120 days prior to your retreat:** \$250 cancellation fee (Mandala Hall or Forest Studio) or \$500 cancellation fee (Bald Mountain Center)
 - **Less than 120 days prior to your retreat:** 100% of deposit forfeited
 - **Less than 2 weeks prior to your retreat:** 100% of deposit forfeited and additional \$1000 cancellation fee is charged
 - **Other cancellation stipulations:**

- **In the event the Facilitator cancels the retreat at any time** Elohee will refund the registrants in full. The facilitator will be charged a 5% fee of all refunds Elohee makes to the registrants.
 - **Federal or State Emergency:** If a Federal or State emergency is enacted that prevents your retreat from being held, Elohee will give the facilitator the option to reschedule their retreat within a 1-year time frame and their initial deposit will be moved over to the rescheduled retreat dates. If the facilitator chooses not to reschedule within the year, but rather cancel their retreat entirely, Elohee will refund 50% of the initial deposit.
- **Participant Payment and Cancellation Policy:** Please review Elohee's policies regarding participant cancellations.
 - **Deposit:** A 40% deposit from the participant is due at registration. Each registration deposit includes a non-refundable \$100 processing fee.
 - **Full payment** is due 2 weeks prior to the start of the retreat. If payment is not made in full 2 weeks prior, Elohee will charge the card on file for the remaining amount owed.
 - **Canceling Up to 6 weeks prior to start of retreat:** Refunds are available minus the \$100 processing fee
 - **Canceling between 6 weeks and 2 weeks prior to retreat:** Elohee will retain the entire 40% deposit.
 - **Canceling 2 weeks or less prior to retreat:** No refunds

Why we have a cancellation policy - It is Elohee's goal as a business to have a cancellation policy that reflects a relationship with our customers that is mutually beneficial and to operate in a manner that is protective of both parties. It requires both parties to be committed to and responsible for the scheduled event. It ensures that we are able to create a space and manage an event that is reflective of the great work the facilitators who rent our property provide.

It is important for us to receive a deposit and hold to our cancellation policy to cover the costs our business has suffered as a result of a cancellation including but not limited to the following:

- The costs of the administrative work already done to create, promote, and book your retreat.
- The costs of retaining employees that work during retreats and all other costs pertaining to the operation of our business.
- Receiving a cancellation notice close to the retreat start date makes it so we are unable to rebook the space to recover lost income for that time. This holds especially true to peak times in our business where we have had interest in the time booked.

Other Terms & Conditions

Alcohol Policy: Elohee is an alcohol-free facility.

Adult Retreat Facility: Elohee is an adult retreat facility for people 18 and older. Please inquire about any possible exceptions.

Code of Conduct: Facilitators, guests, and staff must be respectful to each other. Your retreat may be sharing space with others outside your retreat. There is a zero-tolerance policy for violence of any kind. Violent behavior will require the involvement of law enforcement and violent offenders will be removed from the property.

Covid-19 Safety Policy: Facilitators are encouraged to set their own Covid-19 safety policies. We follow our normal sanitation protocols in the kitchen and dining areas that meet health code standards. The same standards are followed by the staff in the Spa and Gift Shoppe. We have hand sanitizers in meeting spaces and the dining room. We provide disinfectant spray for yoga mats.

General Liability Insurance: We require General liability insurance from all facilitators to cover any incident that may occur while you are using our location for your business. Elohee must be added as an additional insured on your Certificate of Insurance (COI) for the duration of your retreat, or open ended if you host several retreats a year at Elohee. The COI is issued by your insurance carrier, usually without additional cost.

We recommend that you also carry professional liability insurance (also known as Errors & Omissions) to protect your expertise. If you already have this type of insurance, your insurance carrier might be able to add general liability at a reduced cost.

Internet Access: There is no internet access at the Bald Mountain Center. You will need to bring your own hotspot if you wish to connect to the internet. If you have an emergency situation requiring internet access, please contact Elohee staff via text or call 770-316-9195. Thanksgiving House offers high-speed internet access at no extra cost.

Pet Policy: Pets are not allowed unless they are certified service animals. If the guest does bring a certified service animal there is a non-refundable pet fee of \$100 and is responsible for any damages.

Property Damage by Participant: In the event that any damage to the property, facilities, or facility contents occurs as a result of the participant's willful actions, neglect, or recklessness, participant will be held liable for any and all costs associated with any actions of neglect or recklessness. In this instance, an itemized list of damages and repair costs will be assessed, and their credit card charged.

Property Damage by Facilitator: In the event that any damage to the property, facility, or its contents occur as a result of the facilitator's neglect, or recklessness, the facilitator will be held liable for any and all costs associated with any actions of neglect or recklessness. In this instance, an itemized list of damages and repair costs will be presented to the facilitator. The repair costs are due

upon receipt. Facilitator will be held accountable for the facilitator's participant's willful actions, if the perpetrating participant cannot be identified.

Quiet Time: In respect of other Elohee guests and surrounding neighbors quiet time begins at 10:30PM.

Retreat Coordination Policy: Retreat planning specifics are required one month prior to the start of your event in the Elohee provided format for planning purposes. Failure to submit information requested one month prior to retreat start date will result in a \$250 Administration Fee applied to the invoice.

Room/Prop Set-Up and Breakdown: Facilitator is responsible for room/prop set-up and breakdown. Failure to do so will result in a \$250.00 fee.